

# Lowering brake valve cartridge 1317-2-FM

## Type: MHC-005-SJSH-00B-FM (Nr. 2 987 180)

### Item no.: F07-FM02-001

#### Description:

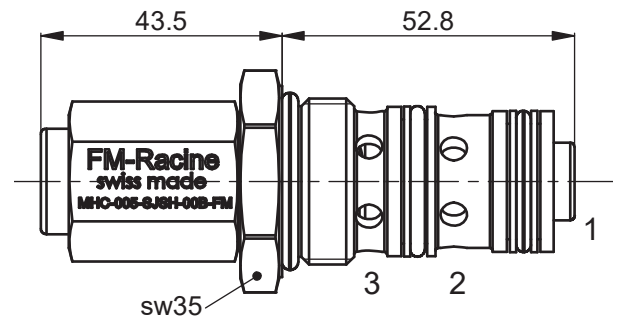
The MHC valve is an externally controlled screw-in lowering brake valve with three connections.

#### Function:

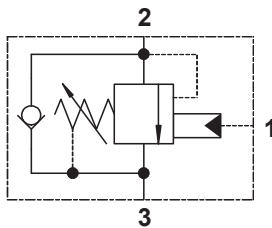
The MHC lowering brake valve permits free passage from Connection 3 (inlet) to Connection 2 (load). Passage from Connection 2 to Connection 3 is blocked until the preset pressure is reached or until there is sufficient control pressure at Connection 1 (control connection).

#### Parameters:

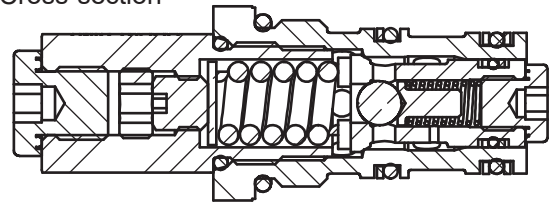
Typical application pressure:	210 bar (3000 psi)
(all connections)	
Nominal flow rate:	25 l/min
Opening pressure at 1 l/min:	62-210 bar (900-3000 psi)
Temperature range:	-20 to +120°C
Installation chamber:	CDD-1011
Control pressure ratio:	10:1
Liquid:	All common hydraulic fluids, such as HLP-ISO-VG46
Filtration:	Purity grade 18/16713
Weight (screw-in valve only):	0.57 kg
Sealing set, item no.:	F67-FM00-002 NBR



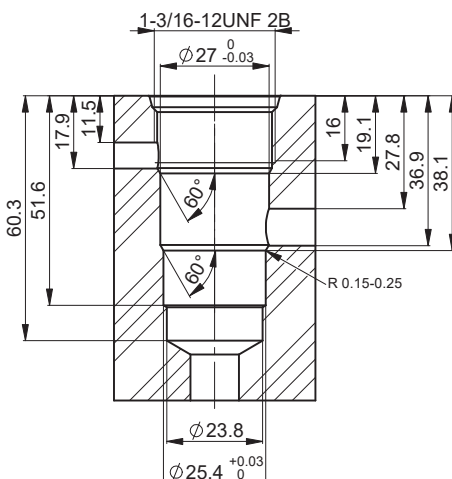
#### Circuit symbol



#### Cross-section



#### Installation chamber CCD-1011



#### Pressure decrease curve

